

Zotero



Main Zotero 5.0 download:

<https://www.zotero.org/download/client/dl?channel=release&platform=win32&version=5.0.80>

Zotero and browser integration

For firefox:



<https://www.zotero.org/download/connector/dl?browser=firefox&version=5.0.60>

For Chrome:



<https://chrome.google.com/webstore/detail/ekhagklcjbdpajgpjgmbionohlpdbjgc>

Zotero and Word integration

Zotero should automatically integrate with word. However, sometimes there are problems. (https://www.zotero.org/support/word_processor_plugin_manual_installation)

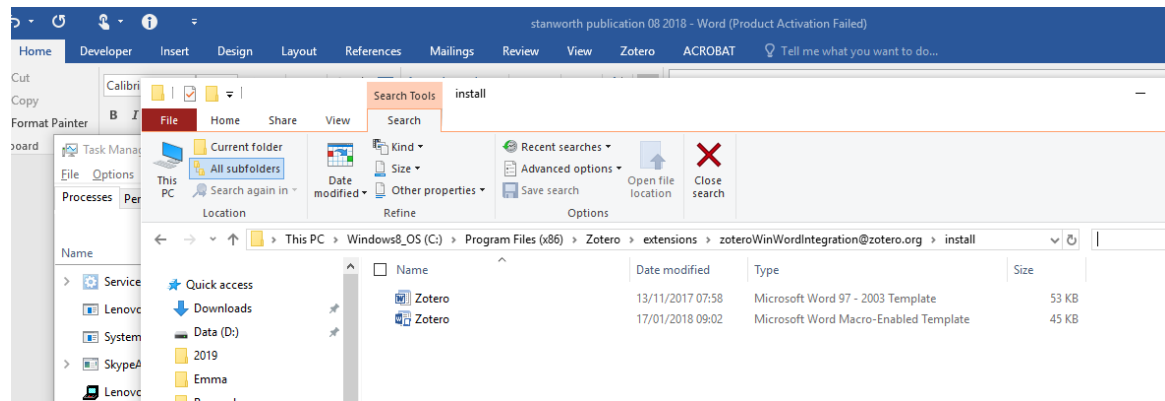
Manually install Word for Windows

1. Open the Zotero installation folder (usually *C:\Program Files (x86)\Zotero*).
2. In the installation folder, open *extensions\zoteroWinWordIntegration@zotero.org\install*, (See Figure 1 below)

where you can find a copy of the file *Zotero.dotm* (for Word for Windows 2007 and higher) or *Zotero.dot* (for older versions of Word). If the folder is empty, the file was somehow deleted — possibly by security software — and you should reinstall Zotero.

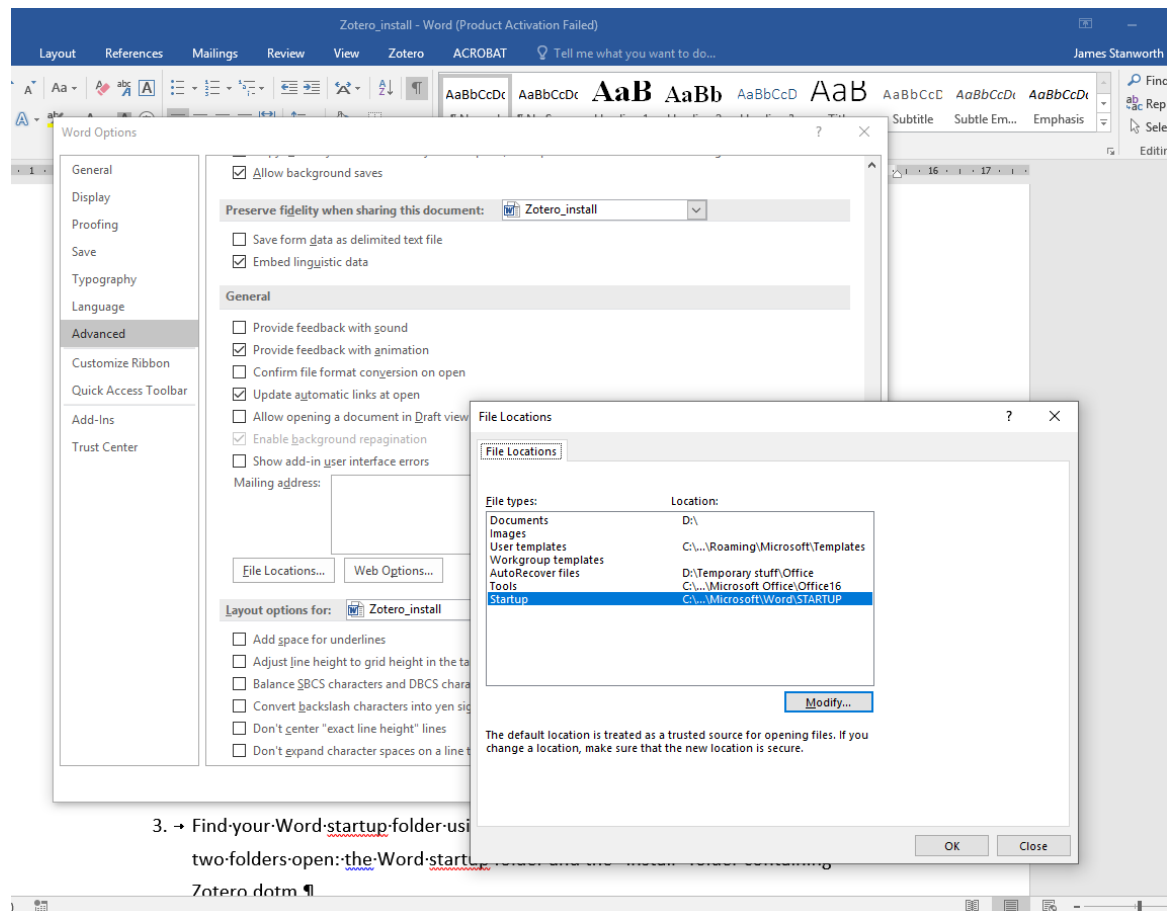
3. Find your Word startup folder using the instructions below. You should now have two folders open: the Word startup folder and the “install” folder containing *Zotero.dotm*.
4. Copy the *Zotero.dotm* file to your Word Startup folder. (Be sure to copy the file rather than moving it.)
5. Start (or restart) Microsoft Word to begin using the plugin.

Figure 1 Location of word configuration files



Finding the Word startup file: Click File tab in the Word ribbon and then click Options (Figure 2). In Word Options, click Advanced. Under General, click File Locations. The Startup folder should be listed there.

Figure 2 Location of the startup file



3. → Find your Word startup folder using the following steps:
two folders open: the Word-startup folder and the Word-startup folder.