

Basic equipment

To get the most out of on line class you need to have access to the following basic equipment. Please go through each item and get familiar with how your own type of equipment works.

Equipment – web cam



- If you do not have a webcam built into your computer you need an external cam.
- Logitech make a range of good quality cams. These are a little expensive but they seem to be durable. The sound *and* picture quality is good.
- If you want to use other brands try them in store before you buy. Then you can assess the picture quality.
- NOTE follow the instructions carefully when you install the cam (for Logitech disk *first* and then *plug in* the cam).

Equipment – head set

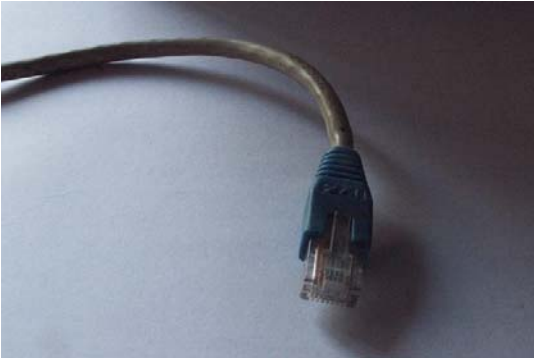


- A headset (that includes earphones and microphone) is important
- There are a huge variety in store with a big price range (less than 100 NTD to 1000 NTD)
- Philips produce a mid price range
- These are comfortable, easy to use and the sound quality is good.
- When you connect check to see that the microphone is going to the microphone socket and the earphones to the earphone socket.



- If you are working in pairs (A&B) you need to have a splitter. So person "A's" microphone wire and person "B's" microphone wire go into the splitter. The splitter is then plugged into the computer.

Equipment – connection



- You need to connect your computer with an Ethernet cable. The video and audio we use in on-line class needs a fast and *stable* connection.
- A wireless connection *is not stable*. It will not work smoothly enough for us to have class.

Equipment – 2nd best



- You may already have an external microphone and earphones.
- These can be used with a web cam.
- Please make sure that the webcam microphone is *disabled*. It is essential that *only* the sound *from the external microphone* is used.